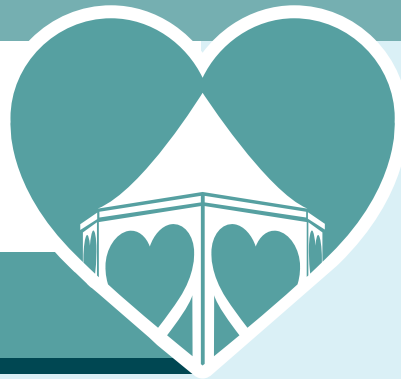




Diolch i chwaraewyr  
y Loteri Genedlaethol  
Thanks to National  
Lottery players

CALON  
TAF



calontaf.co.uk    
CalonTaf@rctcbc.gov.uk

**DISCOVERING YNYSANGHARAD:**

# A Journey through Time and Remembrance

A Teacher's guide to active learning  
through Heritage and Commemoration

Ynysangharad War Memorial Park is a unique space where history, nature, leisure, commemoration and human connection come together to provide your pupils with a rich learning experience.

This is a companion to our other teaching packs:  
**Game On!** and **Eco-Explorers in Green Spaces**

**CURRICULUM FOR WALES**

This resource  
is intended for  
progression step 3,  
but can be adapted  
for use at other  
stages.

**Mae'r ddogfen hon ar gael yn Gymraeg | This document is also available in Welsh**

Parc Coffa  
**YNYSANGHARAD**  
War Memorial Park  
Pontypridd CF37 4PE



Trawsnewid Trefi  
Transforming Towns



Mae croeso i chi gyfathrebu â ni yn y Gymraeg | You are welcome to communicate with us in Welsh  
53089-22 + 2025



## HISTORY AND HERITAGE:

**Ynysangharad War Memorial Park (YWMP) is a testament to the collective spirit and vision of the Pontypridd community.**

The park was not, as were many others, gifted by a wealthy benefactor, but was acquired through public subscription and contributions from the Miners' Welfare Fund. This is a powerful example of shared purpose, as local people, surrounded by heavy industries that were affecting their health, recognised the value of green spaces, recreational opportunities and sporting activities.

The park was officially opened in 1923 by Viscount Allenby, the commander of the Egyptian Expeditionary Force during the First World War. The layout of the park has changed very little since it opened, retaining many of its original features, making it ideal for learning about the history of the park and the communities it serves.

**Find out more about the history of the park here:**

[www.rctcbc.gov.uk/YnysangharadWarMemorialParkPontypridd](http://www.rctcbc.gov.uk/YnysangharadWarMemorialParkPontypridd)

**Sport has always been an important provision of the park.**

For learning resources on this, see 'Game On! Ynysangharad War Memorial Park: A Teacher's Guide to Active Learning through Sporting Heritage'.

## Key Features of the Park:

### • Evan James & James James Statue:



Erected in 1930, this is a memorial to the father and son who composed the Welsh national anthem *Hen Wlad Fy Nhadau* / Land of My Fathers.

### • Bandstand:



This opened in 1926 and highlights the park's role as a cultural hub extending beyond sporting activities. Music is still played here.

### • War Memorials:



From the beginning, YWMP was intended as a place of remembrance. While initially meant to honour the fallen from Pontypridd in the First World War, it now commemorates local people who made the ultimate sacrifice in service to their country.

### • The Lido:



The National Lido of Wales, recognised with a Grade II listing, welcomed its first visitors on July 30, 1927. It was restored to its former glory and updated in 2015, and remains the only surviving open-air lido in Wales.

### • Sunken Garden:



This was built in 1923 and was influenced by Italian landscape design.

## THEMES AND TOPICS

Since it opened, YWMP has promoted the value of community space. Finding out about these offers rich learning opportunities for your pupils.

With the flexibility of the new curriculum, you can integrate a variety of learning experiences into your lessons, ensuring that your pupils gain the most from their time in the park, with plenty of follow-up classroom work.

- **VISION AND PASSION:**

The importance of community power

- **GREEN LUNGS OF THE TOWN:**

The importance of open spaces for the health and wellbeing of working people in the early 20th century.

- **INDUSTRIAL PONTYPRIDD:**

Before the development of the coal and iron industries, Pontypridd was a tiny hamlet. It expanded significantly, having several collieries and becoming an important transport hub.

- **THE WAR MEMORIALS:**

The importance of remembrance, symbolism and commemoration.

- **NATURE:**

Biodiversity, climate change and habitat.

- **COMMUNITY CONNECTIONS:**

Oral histories, then and now, and the future of the park.

## CYNEFIN, GLOBAL WALES AND DIVERSE EXPERIENCES

While being very much a feature in the local landscape, YWMP is a microcosm reflecting the interconnectedness of Wales and the world.

Through its people, sporting heritage, architectural influences, commemorative spaces, and natural environments, the park offers multiple topics through which to make global connections.

By supplementing your park explorations with research at the county archive, local library, and community resources, you will ensure that your pupils get the best possible learning experience.

## SKILL AND CHALLENGE

Each activity offers a different set of challenges, which the pupils can explore and discuss:

- **FOR YOUNGER CHILDREN (9-11):**

Focus on fun and basic skills.

- **FOR OLDER CHILDREN (12-14):**

Introduce more complex rules, encourage strategic thinking and include more historical context.

Each activity can be simplified or made more challenging, depending on the age of the pupils.

## BENEFITS FOR TEACHERS:

- Satisfies cynefin
- Offers opportunities for cross-AOLE activities
- Engages pupils of all academic and physical abilities
- Develops awareness of and pride in the history and heritage of locality
- Can be taught year-on-year
- Requires no specialist knowledge from the teacher
- Can be used to establish links with local individuals

## IDEAS AND ACTIVITIES

### SCIENCE AND TECHNOLOGY

- The park is home to a large variety of deciduous and evergreen trees. These include turkey oaks, horse chestnuts, London planes, holm oaks, weeping willows and cedar of Lebanon.
- Hedgerows and flowerbeds are not only pleasing to look at but they are also great habitat for birds, small mammals, invertebrates and insects, in which they can shelter, feed and breed.
- The park now has several areas left uncut as wild zones. These encourage a greater variety of diversity to thrive than more formal areas.

**Both formal and informal areas offer a wide range of learning opportunities that include:**

■ **Biodiversity Study:**

Identify and record different plants and animals in the park, and investigate the park's ecosystem and food chains.

■ **Weather and Climate:**

Observe and record weather patterns over a period of time.

■ **Landscape:**

Understand concepts such as erosion, weathering and the water cycle, and discuss climate change and its impact on the park's ecosystem.

- Document the park's landscapes, architecture, and wildlife through photography or film. Create a photo essay or short film capturing the essence of the park.

ACTIVITY

### TREE TIME CAPSULE

**Objective:** To reflect on the park's legacy, understand chronology and consider the environment.

**Materials:** Paper, markers/pencils.

**Gather pupils around a particular tree in the park.**

- Discuss the tree's age, its role in the environment and as habitat.
- Consider what it has 'witnessed' throughout its life.
- Ask your pupils to draw a picture of the tree and to write a message of hope for the park's future.

### MATHS AND NUMERACY

■ **Measurement and Estimation:**

Measure distances, areas and volumes within the park, such as the size of specific areas or the height of trees. Estimate the number of people using the park over a period of time.

■ **Geometry:**

Analyse the shapes and patterns found in the park's design and architecture.

■ **Data Collection and Analysis:**

Collect data on the park's usage (how people use the park, which sport they play, where they relax). Draw conclusions on trends from the findings.

ACTIVITY

### PARK PLANNERS DESIGN CHALLENGE

**Objective:** Understand the intentions behind the park's design and its connection to health and well-being.

**Materials:** Paper, markers/pencils.

**Introduce the concept of urban planning. The park didn't just suddenly appear – it was carefully planned to make the most out of the space. Each feature – including each tree and bush – was put there deliberately to make the park look attractive and to make the most of the space they had for sport and relaxation.**

- Divide the pupils into groups and have them map out the park, with its features and paths.

# IDEAS AND ACTIVITIES

## HUMANITIES

### Local History Research:

Investigate the history of the park, including its founding and role in the community. Research people and events commemorated in the park's memorials. Interview local residents to collect oral histories about the park and its significance.

### Industrial Heritage:

Explore the connection between the park and Pontypridd's industrial past. Visit nearby industrial heritage sites and link them to the park's history.

### Geography:

Create maps of the park, highlighting key features and landmarks. Use compasses and maps for orienteering activities. Analyse the park's topography and its impact on drainage and land use.

### Environmental Impact Assessment:

Investigate the environmental impact of human activities in and around the park. Assess the park's role in mitigating climate change and promoting biodiversity. Develop proposals for sustainable practices within the park.

## ACTIVITY

## COMMUNITY VOICES

**Objective:** Gather perspectives on the park and its role in the community today.

**Materials:** Recording devices, consent forms, interview questions.

**Have the pupils prepare questions about the park's importance, how people use it, and their hopes for its future.**

- Interview local people.
- Share their findings with the school or at a community event.

## LANGUAGE AND LITERACY

- Write poems, stories, or plays inspired by the park's history, people, or natural features.
- Develop interpretive signage or information panels for the park.
- Language and literacy is incorporated into every activity in this pack.

# IDEAS AND ACTIVITIES

## CREATIVE ARTS

### ■ Art and Design:

Create sketches, paintings, or sculptures inspired by the park's natural beauty. Use objects found in the park (reminding pupils to only pick twigs, leaves or flowers that have already fallen to the ground) to create artistic installations or collages.

### ■ Design and Architecture:

Analyse the park's design elements and architectural styles. Design new features or improvements for the park, considering its historical context and current needs.

## ACTIVITY

### HONOURING OUR ANTHEM

**Objective:** Creating cultural pride through learning the Welsh national anthem, promoting inclusivity and community among diverse pupils.

**Materials:** Lyrics of the anthem (bilingual), audio recording of the anthem, musical instruments (optional).

**Gather the pupils at the Evan James and James James statue.**

- Explain the importance of a national anthem.
- Encourage reflection on the meaning of the words and the power of the music.
- Move to the bandstand to sing the anthem. Encourage them to write their own anthem.

## HEALTH AND WELL-BEING

- Guide the students on a mindful walk through the park, encouraging them to focus on their senses and surroundings. Prompt them to notice the sights, sounds, smells and textures of nature. Discuss how this makes them feel.
- Discuss the benefits of regular exercise and being outside for physical and mental health.
- Every activity in this pack will encourage your pupils to enjoy the outdoors, no matter what their level of physical ability is.

## FIND OUT MORE:

**YWMP website:** [www.rctcbc.gov.uk/YnysangharadWarMemorialParkPontypridd](http://www.rctcbc.gov.uk/YnysangharadWarMemorialParkPontypridd)

**Glamorgan Archives:** [www.glamarchives.gov.uk](http://www.glamarchives.gov.uk)

**Pontypridd Library:** [www.rctcbc.gov.uk/PontypriddLibrary](http://www.rctcbc.gov.uk/PontypriddLibrary)

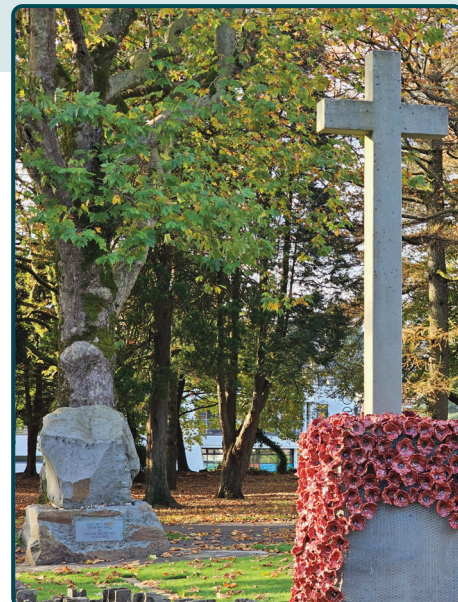
**Rhondda Cynon Taf Heritage Service Digital Archive:** [www.rctourheritage.com](http://www.rctourheritage.com)



# WAR MEMORIALS

## STORIES IN STONE: UNDERSTANDING WAR AND SACRIFICE

- Learning about the war memorials in the park is important for instilling values of remembrance, gratitude, empathy and civic duty in young people.
- Memorials help children and young people connect with the past and grasp the sacrifices made by those who fought in conflicts. They are tangible reminders of historical events and the human cost of war.
- Studying the lives of those commemorated helps develop empathy and compassion for others, understanding the impact of war on individuals, families and communities.
- Memorials can encourage pupils to think about how they can contribute towards a more peaceful and just world.



### Community Cohesion through Commemoration

- **Shared heritage and values:**  
War memorials represent shared sacrifices and values that transcend cultural and ethnic differences.
- **Conflict and the individual:**  
Hearing about conflict in the news can often separate us from its impact on the individual and their families. Learning about people named on the memorials can promote empathy across cultures. It highlights the universality of human experiences during times of conflict and the shared desire for peace.
- **Belonging:**  
For newer residents, learning about the war memorials and the local history of the people named on them can help them feel more connected to their new home.
- **Shared humanity:**  
War memorials remind us of the fragility of peace and the importance of working together to prevent conflict. Work with your pupils to identify common values and aspirations to promote a sense of unity and purpose.

### ACTIVITIES

#### Memorial Mapping:

**Map the location of the memorials on a plan of the park.**

Explore the symbols used on them, such as images, inscriptions or artistic elements. Understand why they were placed in such public spaces.

#### Stories in Stone:

**Research some of the individuals commemorated.**

Use local newspapers and family and county archives to trace individuals. Encourage creative expression through poems, short stories, artwork, or presentations.

#### Poppy Field:

**Have each child make and decorate a poppy, each with a personal message on it.**

Display the poppies in the park (with permission), at the school or at a local community centre.

# Advice for Teachers on taking pupils to the park and on using the activity sheet

## Taking pupils to the park

Visiting the park is an exciting and fun experience for your pupils but it is important to set clear boundaries with them before heading out.

Here are some tips to help you get the most out of your trip to YWMP.

- **SAFETY:**

Remind pupils about basic safety rules, like staying together, not talking to strangers and to shout out if they get lost. Introduce the pupils to the park rangers and supporting staff who are happy to help.

- **FIRST AID:**

Bring a kit for minor injuries – they're going out in nature, cuts and grazes can happen.

- **PATHS AND MOWN AREAS:**

It's tempting to run everywhere, but reinforce the need for them to stick to paths and mown areas. Long grass and 'wild zones' are homes for lots of creatures that shouldn't be disturbed.

- **NATURE'S TREASURES:**

It's fine to pick up twigs, leaves and flowers that have already fallen to the ground, but we should leave those that haven't in their place so that everyone can continue to admire their beauty.

- **SHARE THE SPACE:**

They will need to keep an eye out for walkers, runners and cyclists.

- **RESPECT THE PARK:**

All litter needs to be either taken back to school or placed in a litter bin.

## Activity Sheet

Print off the double-sided activity sheet for each of your pupils before you visit the park.

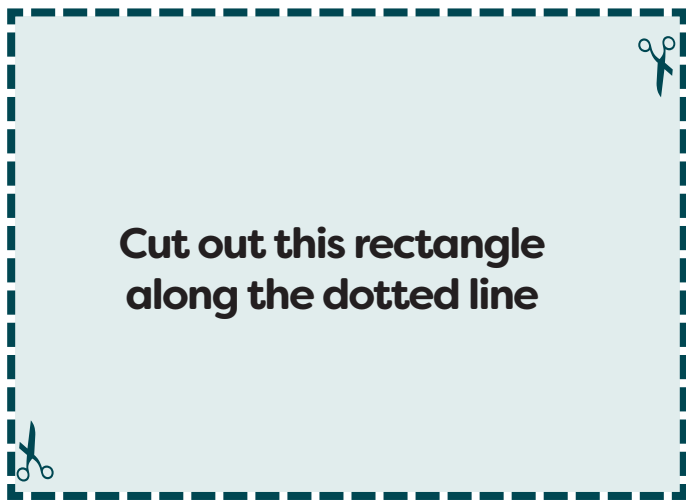
- It is available in Welsh and English, in colour and black-and-white.
- Make sure the pupils have cut out the rectangle on the page before leaving school to save taking scissors to the park.
- It's ideal for interactive learning about the park's heritage.

Thank you for using this pack to explore Ynysangharad War Memorial Park with your pupils. We hope you have a fantastic time discovering its wonders and making memories that will last a lifetime.



# Nature Detectives

at YNYSANGHARAD WAR MEMORIAL PARK



## PARK DESIGNER CHALLENGE

### Did you know...

Everything in this park was carefully planned! The paths you walk on, the trees and flowers, even the sports fields – all were designed to make the park beautiful and fit everything in perfectly.

### Frame your view...

Now, let's see the park like an artist!

- Hold this sheet up (about 10cm away).
- Close ONE eye so you can see through the cutaway rectangle.
- Turn around slowly until you find a view you love.
- Draw what you see inside the rectangle in the space to the left.

Why did you choose this view? What made it special for you?

## HUG A TREE!

### How many of you does it take to hug a tree?

Work with your friends and find some trees that are safe and easy to approach (don't step on any flowerbeds or wild areas!).

Find out which tree takes the most of you to reach all the way around it.

- How many of you tree huggers did it take to encircle the biggest tree you found?

- How many trees did you hug before finding your biggest tree?

### Now stand still and listen closely... the park is full of sounds!

Some are made by nature (such as birds, animals, or wind) and some are made by humans (such as talking, shouting, or running) or from things humans have made (such as a cricket ball striking a bat, cars or aeroplanes). See if you can hear three natural sounds and three human or human-made sounds. Note them down below:

#### Sounds from Nature

1

2

3

#### Human or Human-made

1

2

3

# Nature Detectives

at YNYSANGHARAD WAR MEMORIAL PARK



## BIRD'S EYE VIEW

### Soar over the Park!

- **Imagine:** Close your eyes and picture yourself as a bird soaring high above Ynysangharad War Memorial Park. Spread your wings and feel the wind beneath your feathers.
- **Observe:** What amazing sights would you see from up there? The winding paths? The sparkling water? The grand buildings and sporting areas?
- **Feel:** How does it feel to be flying free, looking down on the world below? Are you excited, peaceful, or maybe a little dizzy?
- **Describe:** Now, open your eyes and grab your pencil. Write a short description or poem about your bird's eye view of the park.

### You could start your writing with words like these:

- 'As I soared above the park, I noticed...'
- 'I felt the wind in my feathers as I looked down and saw...'
- 'I was so high, the park looked like a...'

### Your story/poem:

## ZOOM IN ON NATURE!

You've seen the park as a landscape and from a bird's eye view, now let's get close to nature.

- **Find your spot:**  
Choose a patch of ground that catches your eye. It could be a grassy area, a patch of soil, or even a rocky spot.
- **Frame your view:**  
Place this activity sheet on the ground, making sure the cutaway rectangle is over your chosen spot.
- **Observe closely:**  
Take a moment to really look at what's happening inside the rectangle. What tiny details do you see? Different shaped leaves? Colourful stones? Busy insects?
- **Draw your mini world:**  
In the space next to the rectangle, draw a detailed picture of everything you see through the hole. Try to capture the textures and shapes as accurately as you can. Use coloured pencils if you have them!

